

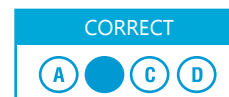
# ISFO English Sample Paper

MAXIMUM TIME: 60 MINUTES

MAXIMUM MARKS: 100

## INSTRUCTIONS

1. Please DO NOT OPEN the contest booklet until you are asked to do so.
2. The question paper comprises of 4 sections (Total 50 questions):
  - Section A: Vocabulary** 10-Questions (2 marks each)
  - Section B: Grammar** 20-Questions (2 marks each)
  - Section C: Reading and Writing** 15-Questions (1 mark each)
  - Section D: BrainBox** 5-Questions (5 marks each)
3. All questions are compulsory. There is no negative marking.
4. No electronic devices capable of storing and displaying visual information such as mobiles are allowed during the course of the exam.
5. Fill all your details properly on the OMR sheet.
6. There is only ONE correct answer of each question.
7. To mark your choice of answers by darkening the circles on the OMR Sheet, use an HB Pencil or a Blue/Black Ball Point Pen only.
8. Shade your answer clearly as per the given example.



DO NOT OPEN THIS TEST BOOKLET UNTIL YOU ARE ASKED TO DO SO

Roll No.:

Student's Name:

## SECTION A : VOCABULARY

### Choose the appropriate options.

1. The heated discussion led to a nasty \_\_\_\_\_.
- a) Arguement                      b) Argewment  
c) Argument                      d) Argeument
- 

2. a) Favourable - unfavourable  
b) Like - dislike  
c) Form - inform  
d) Happy - unhappy

3. Synonym of Prejudice is \_\_\_\_\_.
- a) Bias                              b) Counsel  
c) Dubbed                         d) Hate
- 

4. Unscramble the following.  
next / sat / dog / the / to / James
- a) James sat next to the dog.  
b) The dog next to sat James.  
c) The James next to dog sat.  
d) Sat James next to the dog

## SECTION B : GRAMMAR

### Rewrite the underlined as directed.

5. A Kashmiri brown oak large table graced the hall. (adjectives in the correct order.)
- a) Oak Kashmiri large brown  
b) Kashmiri, large, oak, brown  
c) Brown, oak, Kashmiri, large  
d) Large brown Kashmiri oak

### Find the error.

6. Aman had found a wallet while playing on the park.
- a) Had found  
b) A wallet  
c) While playing  
d) On the park

## SECTION C : READING AND WRITING

### Read the itinerary of a school trip given below and answer the questions under it.

#### Day 1

- Departure from Maharani Gaura Devi Public School, Jaipur, by 6.30 a.m.
- Arrive at Delhi by 3.30 p.m. and be introduced to, and get instructions from, the Heritage walk tour guides at Connaught Place.
- Check into Southern Hotel

#### Day 2

- Breakfast at 7.00 a.m.
- Reach Kashmiri Gate by 8.30 a.m.
- Begin the 'Kashmiri Gate 1857 Uprising' heritage walk. Walk through Kashmiri Gate, Nicholson Cemetery, St. James Church, Sultan Dara Shikoh Library, Telegraph Memorial

- Reach Lodhi Gardens 1.30 p.m.
- Picnic Lunch at Lodhi Gardens
- Visit to India Gate
- Guided Tour of Rashtrapati Bhawan
- Dinner and Check out from the hotel.
- Depart Delhi by 10 p.m.
- **Day 3**
- Arrive at Maharani Gaura Devi Public School by 8.00 a.m.

7. To which city was the school organising the trip?

- a) Jaipur
- b) Delhi
- c) Agra
- d) Mathura

8. Which hotel did the students check into?

- a) Kashmiri Gate Hotel
- b) Southern Hotel
- c) Heritage Hotel
- d) Lodi Hotel

### SECTION D : BRAINBOX

9. Find the number of spelling mistakes.

This peice of jewellery is changable using an easy manuvour and never fails to exiliarate ladys.

- a) Two
- b) Six
- c) Seven
- d) Three

10. Change the underlined adjective into adjectival phrase.

She was wearing a beautiful silken gown.

- a) Gown of silk
- b) Silk of beautiful gown
- c) a. and b.
- d) Neither a. nor b



### ANSWERS

- |        |        |        |        |        |        |        |        |        |         |
|--------|--------|--------|--------|--------|--------|--------|--------|--------|---------|
| 1. (C) | 2. (C) | 3. (A) | 4. (B) | 5. (D) | 6. (D) | 7. (B) | 8. (B) | 9. (B) | 10. (A) |
|--------|--------|--------|--------|--------|--------|--------|--------|--------|---------|